



Data Sheet CODESYS Modbus Serial Device SL

The CODESYS Modbus Serial Device enables a controller to act as a Modbus serial slave that is programmable with the CODESYS Development System.

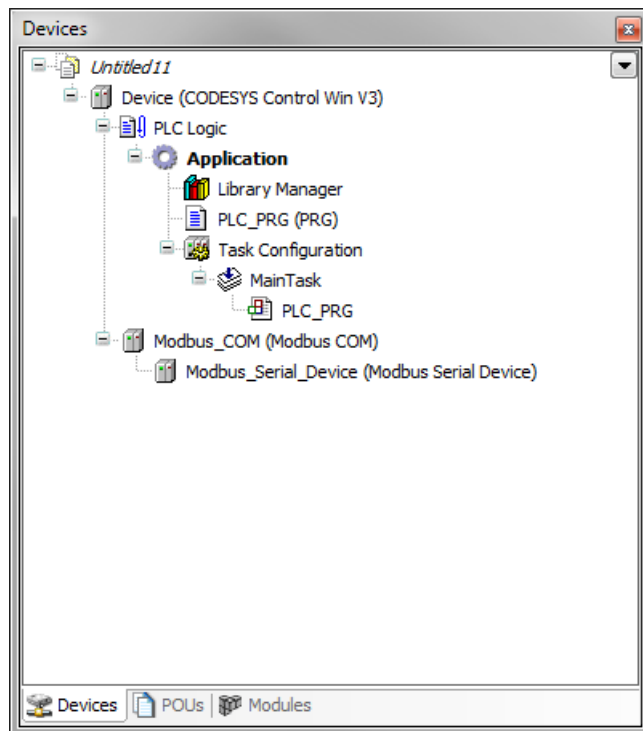
Product description

The CODESYS Modbus Serial Device enables a CODESYS-capable controller to register as a Modbus serial slave in a Modbus network. For CODESYS-compatible controllers can use this functionality, they require a COM port for communication. The CODESYS Modbus Serial Device product integrates this functionality seamlessly into the existing controller. During project engineering, the Modbus Serial Device is included in the device tree of an IEC 61131-3 project. Then configuration is performed directly in the development environment.

More information

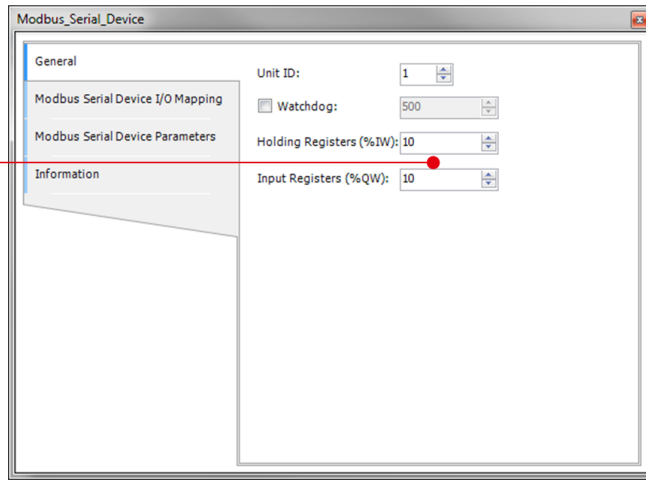
Architecture

Typical structure in the device tree:



Editor:

Inputs and outputs



General information

Manufacturer: 3S-Smart Software Solutions GmbH
 Memminger Strasse 151
 87439 Kempten
 Germany

Support: <https://support.codesys.com>

Item: CODESYS Modbus Serial Device SL

Item number: 2303000019

Sales: CODESYS Store
<https://store.codesys.com>

Included in delivery:

- License key

System requirements and restrictions

Programming System	CODESYS Development System V3.5.5.0 or higher
Runtime System	CODESYS Control V3.5.5.0 or higher
Supported Platforms/ Devices	Note: Use the project "Device Reader" to find out the supported features of your device. "Device Reader" is available for free in the CODESYS Store.
Additional Requirements	<ul style="list-style-type: none"> • CODESYS Control runtime system on the device with SysCom component • Available serial port on the device
Restrictions	-
Licensing	License activation optional on CODESYS Runtime Key or CODESYS Soft Key (free of charge component of CODESYS Controls)
Required Accessories	Optional: CODESYS Runtime Key

Note: Not all CODESYS features are available in all territories. For more information on geographic restrictions, please contact sales@codesys.com.

Note: Technical specifications are subject to change. Errors and omissions excepted. The content of the current online version of this document applies.